



United States  
Department of  
Agriculture

## Rural Development



## Northeast Resource Recovery Association Presentation

*Jon-Michael Muise*

*Area Director USDA Rural Development NH & VT*

# One USDA, Seven Mission Areas

Farm & Foreign  
Agricultural  
Services

Food, Nutrition  
& Consumer  
Services

Food Safety

Marketing &  
Regulatory  
Programs

Natural  
Resources &  
Environment

Research,  
Education &  
Economics

Rural  
Development

# USDA Rural Development

## **Mission:**

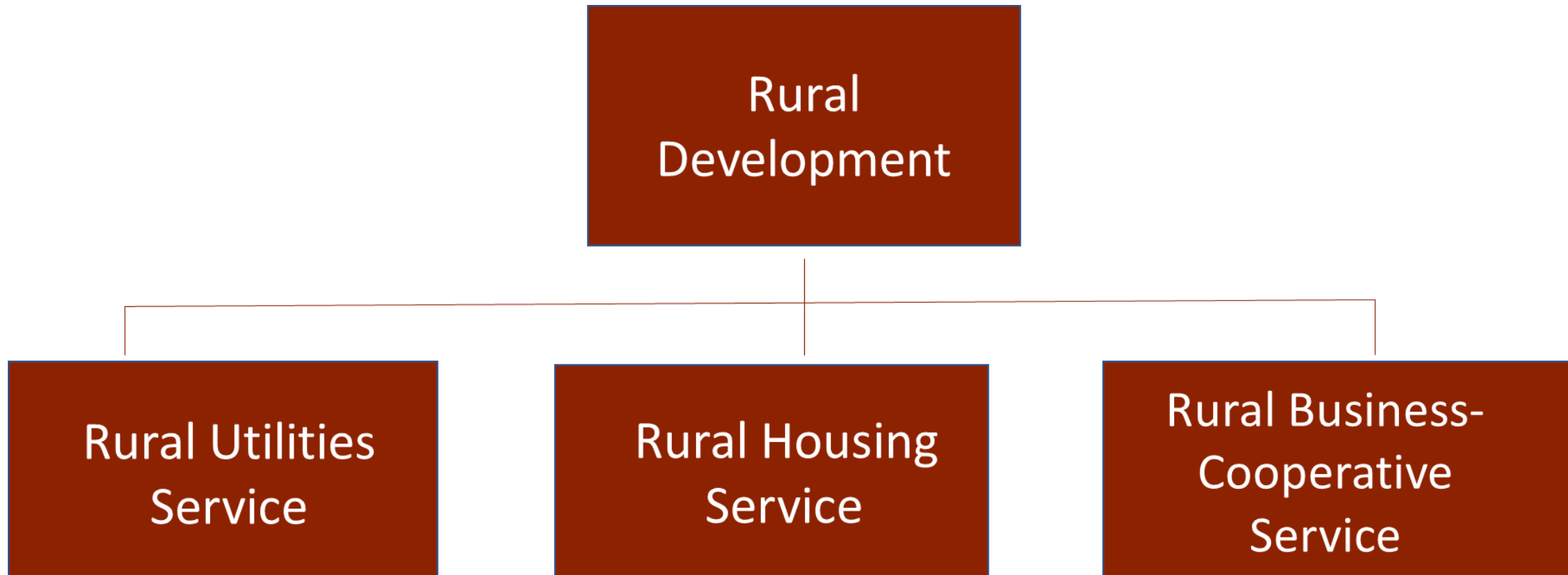
**To increase economic opportunity and improve the quality of life for all rural Americans.**

- **Loan Guarantees**
- **Direct Loans**
- **Grants**



# Rural Development Agencies

The agencies and programs work together and complement each other to build a thriving rural community.



# USDA Rural Development

*Committed to the future of rural communities.*

## **40+ loan and grant programs**

- **Business Programs**
- **Community Programs**
- **Housing Programs**
- **Utilities Programs**





# Community Facilities

- Applicants – Not for profits and Municipalities serving communities of <20K in population
- Hospitals, health clinics
- Schools
- Daycares
- Fire houses, first responder vehicles and equipment
- Community centers
- Arts and Cultural Facilities
- AND Solid Waste/Recycling Facilities!



## Solid Waste/Recycling Projects

**Effingham, NH:** reconstruction of bridge needed to access transfer station

**Plymouth, NH:** glass crusher purchase and storm water work at transfer station

**Northeast Kingdom Waste Management District, VT:** purchase of baler for recycling

**Windham Solid Waste District, VT:** purchase of front end loader

**Bethel, VT:** replacement of scale





**Jon-Michael Muise**  
**Area Director**  
**USDA Rural Development**

28 Vernon Street, Suite 333, Brattleboro, VT05301

Phone: 802-689-3026 | Cell: 802-488-0118

[Jon.muise@usda.gov](mailto:Jon.muise@usda.gov)

<http://www.rurdev.usda.gov/vt>

<http://www.rurdev.usda.gov/NH>

*USDA is an equal opportunity provider, employer,  
and lender*