



Joe Gore
Transfer Station Manager
Wakefield, NH



TRANSFER STATION
♻️ CLOSED ♻️
- TUESDAY
- WEDNESDAY
- THURSDAY

TOWN OF WAKEFIELD
Transfer Station & Recycling Facility
Hours of Operation
Friday thru Monday
8:00 am - 3:00 pm

Acceptable Wastes:
Municipal Solid Waste
Source Separated Recyclables
Limited Brush & Clean Wood

Valid Permit **MUST** Be Affixed
to Vehicle For Admittance.
Wakefield & Brookfield
Residence **ONLY!**

NH SOLID WASTE PERMIT
DES-SW-09-006

Town of Wakefield
2 High Street
Sanbornville, NH 03872
Telephone: 603-522-6205
Emergency Telephone: 911

PENALTY FOR UNLAWFUL USE
Pursuant to RSA:149-M:17

TRANSFER STATION
♻️ OPEN ♻️
- FRIDAY 8:00am-3:00pm
- SATURDAY 8:00am-3:00pm
- SUNDAY 8:00am-3:00pm
- MONDAY 8:00am-3:00pm

NO
SMOKING







**Corrugated
Cardboard
ONLY!**

**REMOVE
STYROFOAM !**






PLASTIC #1-#7
BOTTLES, JARS, TUBS ONLY
PLEASE REMOVE COVERS,
CAPS, AND LIDS
NO! KIDS TOYS, PVC PIPE,
PLASTIC WRAP
NO! AUTOMOBILE PARTS
NO! KIDDY POOLS, HULA HOOPS ETC.

PLASTICS
#1 THRU #7
PLASTIC BOTTLES,
JARS, & TUBS
ONLY
NO
TRASH, PLASTIC BAGS,
STYROFOAM
LARGE PLASTIC TOYS / ITEMS,
PACKING PEANUTS OR
PLASTICS WHICH CONTAIN
HAZARDOUS MATERIALS
OR PESTICIDES
NEW HAMPSHIRE *The Granite State*
Inc.





Contact Information

- Joe Gore
- transferstation@wakefieldnh.com

Jon Edgerly
Operations Supervisor
Barnstead, Chichester,
Epsom, and Pittsfield
Solid Waste District
(BCEP), NH



#1 PETE

BRASS - COPPER - ELECTRONICS

LEAD ACID BATTERIES - SHOP WIRE
SMALL APPLIANCES

#2 HDPE
COLORED

#2 HDPE
NATURAL

PAINT

1 PETE

2 HDPE
COLORED

2 HDPE
NATURAL

1

NO

PAINT



2



Upper Recycling Floor Separation Guidelines			
All Items; bottles, cans, paper & cardboard must be free of food residue, liquids & grease			
Mixed Paper Clean - Dry	Plastics #1 PETE Clean - Empty	#2 HDPE-Natural Clean - Empty	#2 HDPE Colored Clean - Empty
Newspaper Books Cereal / Food Boxes No Soiled-Waxed-Foiled or Plastic Coated Paper	Water / Soda Bottles Juice Bottles Mayonnaise Jar Peanut Butter Jar Spaghetti Sauce Jar NO BLACK PLASTIC	ONLY Milk Jugs / Water Jugs Orange Juice Jugs Primarily Store brand & Oakhurst Containers NO BLACK PLASTIC	ASSORTED COLORS Detergent Bottles Coffee Containers NO BLACK PLASTIC

Recycling Floor

ns, paper & cardboard m

Plastics #1 PETE
Clean - Empty

Water / Soda Bottles
Juice Bottles
Mayonnaise Jar
Peanut Butter Jar
Spaghetti Sauce Jar

3

NO BLACK PLASTIC

Separation Gui

ist be free of food residu

#2 HDPE-Natural
Clean - Empty

CLOUDY ONLY

Milk Jugs / Water Jugs
Orange Juice Jugs
Primarily Store brand &
Oakhurst Containers

4 NO BLACK PLASTIC

Guidelines

Residue, liquids & grease

**#2 HDPE Colored
Clean - Empty**

**ASSORTED COLORS
Detergent Bottles
Coffee Containers**

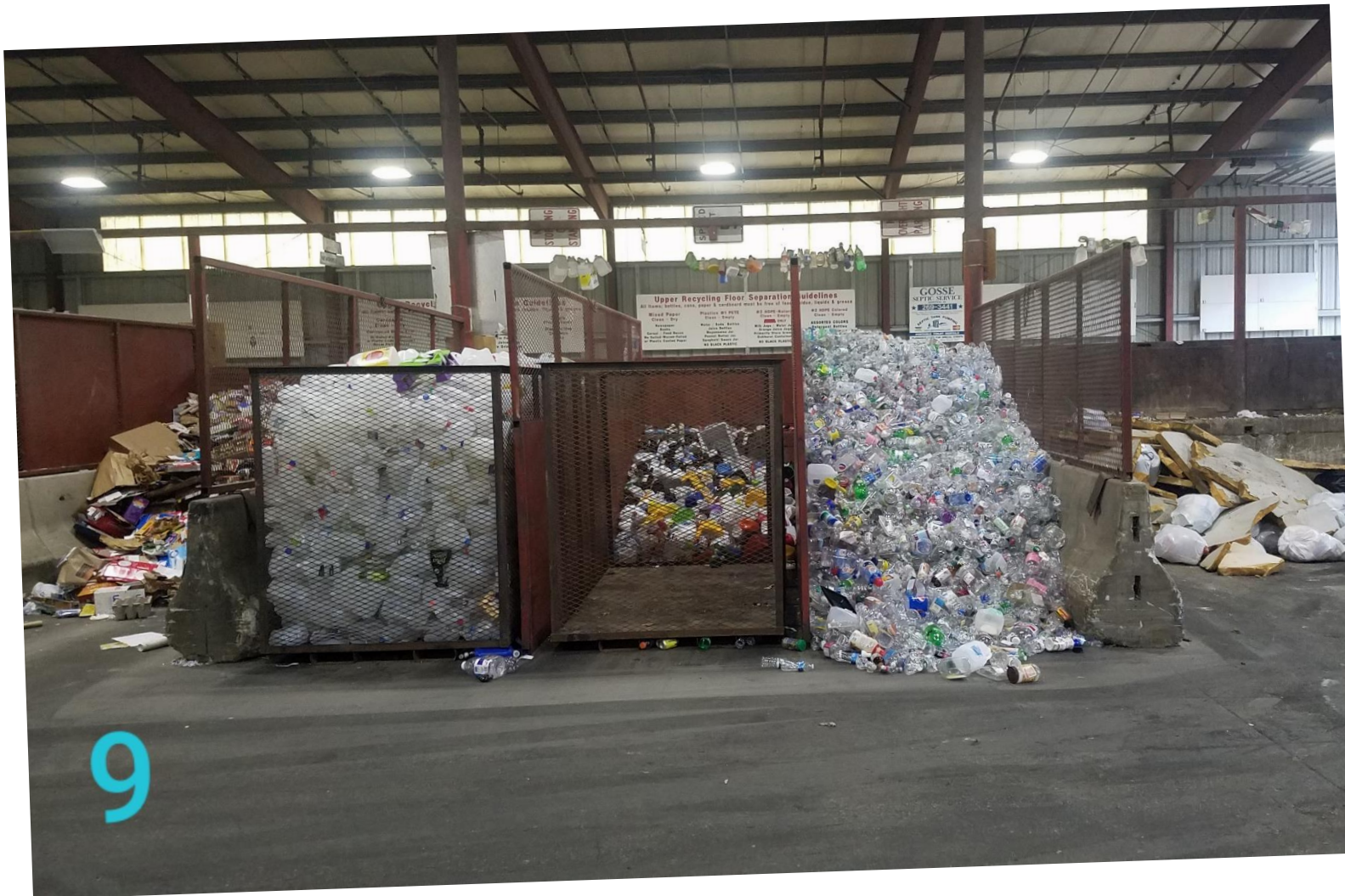
NO BLACK PLASTIC

5



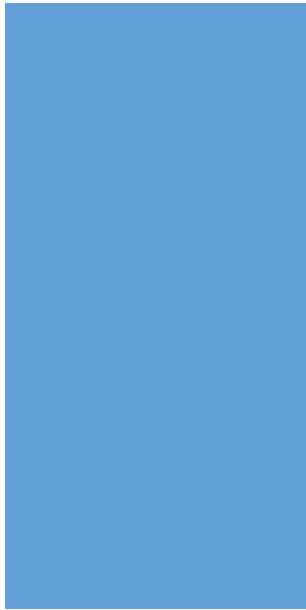






9













Contact Information

- Jon Edgerly
- jon22m17@hotmail.com

IN SEARCH OF “GOLDILOCKS” BALES

NRRA | MAY 11, 2021

EADAOIN QUINN

DIRECTOR, BUSINESS DEVELOPMENT
& PROCUREMENT

MY TRASHY EVOLUTION



Studied Biology



Worked at MRFs



Work at Plastic Reclaimer

ABOUT EFS-PLASTICS

- **Since 2007:** EFS has specialized in post-consumer plastic film and mixed rigid plastic recycling and compounding.
- **Volume:** Converting ~30,000 MT of mixed rigid plastic and ~15,000 MT of film/year.
- Making HDPE, LDPE, PP pellets with full-compounding operation. Producing ~45 different types of products.



POST-CONSUMER
PLASTIC BALE



100% PCR PELLETS



CURRENT EFS LOCATIONS

Listowel, Ontario



Hazleton, Pennsylvania



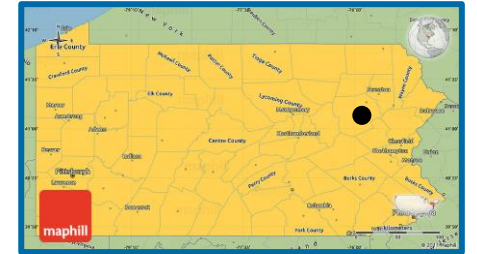
CURRENT EFS LOCATIONS

Listowel, Ontario



- Since 2007
- Receives MRF grade, post-consumer material
 - Mixed Plastic
 - HDPE
 - Film
 - PP
- 24-6 operation schedule
- ~45 employees

Hazleton, Pennsylvania



- Since 2018
- Receives MRF grade, post-consumer material
 - Film
 - HDPE
- 24-6 operations schedule
- ~17 employees

EFS RECYCLING PROCESS

- Separate lines for mixed plastic and film
- Fully automated system
- Grind, wash, custom compound and pelletize



RAW MATERIAL INPUT



- Types of commodity bales purchased
 - Curbside collected PE film
 - Store take-back film



- Types of commodity bales purchased
 - #3-7 mixed plastic
 - #5 PP
 - #2 HDPE

EFS-PLASTICS PELLETS



EXAMPLES OF END MARKETS FOR RESIN PELLETS

■ Rigid PE & PP Pellets



■ Film LDPE Pellets



WHAT IS THE “GOLDILOCKS” BALE?

- No need to push for perfection
- Can't accept the residue from a MRF
- Many unique ways to create a bale to meet our specs
 - Must meet your goals to be sustainable
 - High tonnage diversion?
 - High revenue?
 - Clean vs. contaminated inbound?



LOOKING FOR NEW SUPPLIERS

#3-7: 55% yield PP + PE

- Positive manual sort on container line after bulky, metal, #1, and #2 removed
 - Recover all remaining plastic
- Negative manual sort on residue line
 - Focus on removing paper, metal, film
- Positive optical sort anywhere on container line
 - Shoot on #3-7
 - Shoot on #2, #4, #5
- Negative optical sort on residue line
 - Shoot on paper, metal, film

KEY ISSUES INFLUENCING OUR BUSINESS

- Supply
 - Increasing contamination in film stream – multi-material films
 - #5 PP lost its “Widely Recyclable” label under How2Recycle Program
 - Attention on chemical recyclers
 - EPR in the US



KEY ISSUES INFLUENCING OUR BUSINESS

■ Demand

- Price of PE & PP are high... right now...
- Ellen Macarthur Foundation
- PCR legislation – California, Washington, New Jersey

We set a target to increase recycled content in our plastic packaging to

25% by 2025

What's the difference?



Post-consumer (PCR)

Reclaimed material from homes and businesses.



Post-industrial (PIR) aka pre-consumer

Imperfect bits and scraps recovered from a factory.

SUPPLY DEMAND BALANCE

Enough supply to meet demand?



Right demand to meet supply?



EADAOIN QUINN

DIRECTOR, BUSINESS DEVELOPMENT & PROCUREMENT

EADAOIN.QUINN@EFS-PLASTICS.CA

WWW.EFS-PLASTICS.CA