



SOCIAL MEDIA AND WEBSITE

ENGAGING RESIDENTS WITH MUNICIPAL RECYCLING

Prepared by Meghan Theriault, P.E.
Gilford Public Works

TODAY'S PRESENTATION

OUTLINE OF TOPICS

- DEFINE RECYCLING GOAL
- CREATE A SLOGAN
- SIMPLE WEBLINK/EMAIL
- DESIGN AND CREATE PUBLIC INFO
- GET INFO OUT INTO COMMUNITY





DEFINE RECYCLING GOAL

WHAT ISSUE IS YOUR TOWN/CITY FOCUSED ON?

- Increase Participation / Up Recycling Numbers
- Reduce Contamination
- Educate Residents On New Process Or Facility
- Funding And Approval For New Facility
- Save Money / Reduce Budget





GOFFSTOWN

CONTAMINATED SINGLE STREAM
CURBSIDE BARREL PICKUP
INCREASING PRICES

GILFORD

PREVIOUS - LACONIA WM SITE
OPENED NEW SOLID WASTE FACILITY
CHANGING FROM SINGLE STREAM TO SOURCE
SEPARATED



Engaging Residents With Municipal Recycling

CREATE A SLOGAN



HUG YOUR BIN

Have you hugged your
recycle bin today?

RECYCLE GILFORD

Keep Gilford Beautiful.

EAT. SLEEP. RECYCLE.

It's Easy.
It's Simple.
It's Important.

RECYCLE BETTER

Recycle today for a better
tomorrow.

SIMPLE WEBLINK & EMAIL

WWW.GILFORDNH.ORG/RECYCLERIGHT
RECYCLE@GILFORDNH.ORG



Gilford Solid Waste Center Household Trash

CAN INCLUDE	DO NOT INCLUDE
<ul style="list-style-type: none">✓ Chip bags, food wrappers (e.g. granola bars)✓ Coated paper items✓ Dirty recycling or liquids (messy pizza boxes, cups with liquid still in them)✓ Dishes or baking glass✓ Disposable items (napkins, paper towels, tissues, plastic silverware)✓ Food waste✓ Juice pouches✓ Plastic wrap, shrink wrap, plastic films or tarps✓ Plastic toys,✓ Plastic bags, caps, lids✓ Rags, fabrics, pillows✓ Wax coated containers (such as juice or milk cartons)	<ul style="list-style-type: none">✗ Yard Waste✗ Household Hazardous Waste (HHW): Automotive products & fuels, cleaners, pesticides, fluorescent bulbs, batteries, pool chemicals, mercury thermometers✗ Tires✗ Construction and demo debris✗ Mattresses & box springs✗ Furniture & carpets✗ Appliances <p><u>THINGS THAT ARE RECYCLABLE:</u></p> <ul style="list-style-type: none">✗ Aluminum Cans✗ Cardboard✗ Glass✗ Mixed Paper✗ Plastics (#1, #2, #5 & #7)✗ Steel/Tin Cans✗ Trash

GILFORD RECYCLE CENTER
100 Recycle Way, Gilford NH 03249
OPEN Tues – Saturday, 8am – 3:45pm
WEBSITE: www.gilfordnh.org/recycleright
EMAIL: recycle@gilfordnh.org
PHONE: 293-0220

*** Many items not allowed in the household trash are accepted at the Gilford Recycle Center for a fee. Please see fee schedule on the website for more info.*

GILFORD RESIDENTS
AS OF 1/2/2020
MUST USE GILFORD
RECYCLE CENTER



www.gilfordnh.org/recycleright

GILFORD SOLID WASTE CENTER ORDER FOR DROP OFF



- **GREEN CONTAINER - GLASS**
- BAY 1 - CORRUGATED CARDBOARD
- BAY 2 - MIXED PAPER
- BAY 3 - ALUMINUM CANS (BEVERAGE)
- BAY 4 - TIN CANS (FOOD)
- BAY 5 - PLASTIC
- **GREEN CONTAINER - GLASS**
- **YELLOW GATE - HOUSEHOLD TRASH**

KNOW THE RULES
RECYCLE RIGHT

FOR RECYCLING RULES, FLYERS AND MORE, PLEASE VISIT:
WWW.GILFORDNH.ORG/RECYCLERIGHT

**BUMPER
STICKERS**

KNOW THE RULES
RECYCLE RIGHT

email us:

RECYCLE@GoffstownNH.gov



DESIGN AND CREATE PUBLIC INFO



Internet Research



Be Creative



Use Known Resources



Recycling Fans



Administrative Assistant



College Interns



High School Class

IDEAS FOR PUBLIC INFO

POST AND SHARE EVERYTHING YOU CREATE!

- Flyers to Hand Out and Promote Online
- Presentations at Schools / Local TV Station
- Neighborhood A-Frame Message Boards
- Oops Tags / Door Hangers
- Bumper Stickers for Town Trucks
- Recent or Upcoming Events



Engaging Residents With Municipal Recycling



GOFFSTOWN

GOAL

REDUCE CONTAMINATION



GOFFSTOWN

REDUCE CONTAMINATION IN SINGLE STREAM



**EDUCATE
RESIDENTS**



**COMPLETE AUDITS
& SHARE DATA**



**POSITIVE
REINFORCEMENT
& REMINDERS**

ZERO-SORT® RECYCLING

TOSS ALL CLEAN & EMPTY RECYCLABLES INTO THIS CONTAINER

CARDBOARD/PAPER



Corrugated Cardboard
(Wavy center layer)



Boxboard
(Dry-food boxes, egg cartons, & rolls)



Junk Mail, Periodicals, & Office Paper
(Paper bags, envelopes, & catalogs)

PLASTIC



Plastic Bottles, Jugs, Tubs, & Lids
(Empty kitchen, laundry, & bath containers)

METAL



Aluminum & Steel Cans
(Foil & empty food & beverage cans)

GLASS



Glass Bottles & Jars
(Empty food & beverage bottles & jars)

NOT ACCEPTED

Plastic bags, bagged recyclables, clothing/textiles, food waste/liquids, tangles such as rope or hoses, scrap metal, batteries of any kind, electronics, wood, medical waste, hazardous materials, explosives, toys, hangers, shoes, waxy cups or plates, food bags or wrappers, plastic wrap or film, shrink wrap, tarps, diapers, human/pet or yard waste, tires or rubber, Styrofoam™, napkins, paper towels, tissues, plastic utensils, register tape, condiment packets, straws, stirrers, coffee pods, ceramics, or baking glass



For recycling tips and resources, visit casella.com/RecycleBetter • 800-CASELLA



KEEP THESE ITEMS OUT OF ZERO-SORT® RECYCLING



PLASTIC BAGS
DON'T BELONG



BAGGED RECYCLABLES
DON'T BELONG



CLOTHING/TEXTILES
DON'T BELONG



FOOD WASTE/ LIQUIDS
DON'T BELONG



TANGLERS
DON'T BELONG



SCRAP METAL ITEMS
DON'T BELONG



BATTERIES OF ANY KIND
DON'T BELONG



ELECTRONIC WASTE ITEMS
DON'T BELONG



NO Medical Waste
(Rubber gloves, sharps, pills, etc.)



NO Plastic Wrap, Films, or Tarps
(Food bags or wrappers, plastic wrap, shrink wrap, or tarps)



NO Hazardous Materials or Explosives
(Find safe and secure disposal near you)



NO Wood, Waste, or Tires
(Wood, diapers, human/pet or yard waste, or rubber)



NO Toys, Hangers, or Shoes
(Donate gently used items)



NO Disposable Items
(Styrofoam™, napkins, paper towels, tissues, plastic utensils, dirty recycling, register tape, condiment packets, straws, stirrers, & coffee pods)



NO Coated Paper Items
(Items with a plastic lining such as waxed coffee or soda cups, & waxed paper plates)



NO Ceramics or Baking Glass
(Donate gently used items)



For more tips and resources, visit casella.com/recyclebetter

TRASH

TOSS ITEMS THAT CAN'T BE RECYCLED OR COMPOSTED INTO THIS CONTAINER



Plastic Bags



Coated Paper Items
(Items with a plastic lining such as waxed coffee or soda cups, & waxed paper plates)



Disposable Items
(Styrofoam™, napkins, paper towels, tissues, plastic utensils, condiment packets, straws, stirrers, & coffee pods)



Dirty Recycling or Liquids



Plastic Wrap, Films or Tarps
(Food bags or wrappers, plastic wrap, shrink wrap, & tarps)



Dishes or Baking Glass

THINK BEFORE YOU TOSS!



For recycling tips and resources, visit casella.com/RecycleBetter • 800-CASELLA

EDUCATE RESIDENTS

USED VENDOR (CASELLA) ONLINE FLYERS

Engaging Residents With Municipal Recycling

Common Recycling Mistakes in Goffstown

Non-recyclable items include:

Plastic Bags
Styrofoam
Plastic Electronics
Ceramics
Straws

Fabrics (these can be brought to the bins at the Transfer Station)



Do Not Bag Recyclables

Thank you for reading!



100% RECYCLABLE

For more information please visit the town website www.goffstown.com or Contact Cathy Willmott at 603-497-3617 x 200.

What is Recyclable?



Plastics labeled #1 - #7
Cardboard
Mixed Paper
Aseptic Packaging (juice boxes)
Aluminum, Tin, and Steel Cans
Glass Bottles



Are you Recycling Correctly?

- Single stream recycling allows all of the recyclables to be put into the blue bin
- Empty and rinse containers
- Flatten, break down, and cut up cardboard, or bring to Transfer Station
- Remove straws
- Screw on bottle caps

Yard trimmings, garden hoses, and food waste are **not** recyclable.



Please bring all yard waste to the transfer station at 404 Elm Street Tuesday through Saturday 7:30 am – 3 pm

Used paper towels and tissues are **not** recyclable.



Cat litter and diapers are **not** recyclable.



All of this recycling has been contaminated and must be processed as trash.

EDUCATE RESIDENTS

FOCUSED ON COMMON RECYCLING VIOLATIONS

Goffstown Department of Public Works



PUBLIC NOTICE: DPW will be performing inspections on blue recycling bins.

WHEN: Starting the week of June 12th

WHERE: All over Town

WHY: Due to the significant amounts of contamination that has been coming into the Transfer Station through curbside pickup.

When the recycling is contaminated, it requires considerable time for Transfer Station staff to remove contaminants. Sometimes entire loads must be processed as trash.

WHAT TO DO: If you receive a violation sticker, your bin will not be emptied. You must correct the violation as noted and then your bin will be picked up the following week.

Multiple violations will result in your recycle bin being confiscated. You will be required to meet with DPW staff to correct all violations before your bin is returned.

COMMON VIOLATIONS TO AVOID

The following objects ARE NOT RECYCLABLE:

- Plastic Shopping Bags
 - Styrofoam
 - Plastic Electronics
 - Ceramics
 - Food Waste
 - Used Paper Towels and Tissues
 - Loose Plastic Bottle Caps
 - Straws
 - Yard Clippings and Garden Hose
 - Textiles
 - Cat Litter
 - Diapers
- Cardboard should be broken down and cut up so it doesn't.
- Plastic containers should be empty and rinsed.
- Textiles can be brought to the collection bins at the Transfer Station.
- Plastic bottle caps can be recycled ONLY when they are on plastic bottles.

COMMENTS
& QUEST.



September 28, 2018 · 🌐

Recently DPW did an internal audit of our single stream with [Northeast Resource Recovery Association \(NRRA\)](#). The results were positive and our contamination rate was around 10%, but there is ALWAYS room for improvement.

The two biggest contamination issues that we saw were plastic bags and food contamination. There were countless small grocery plastic film bags and also large clear or black plastic bags which were holding 100% recyclable material. Please be sure to not bag any recyclables once it makes it to your Blue Bin. They need to go in the trash or back to the grocery stores where you often find recycle stations for bags.

In regards to food contamination, it's pretty easy, simply rinse out all containers so that the food and liquids don't contaminate your entire bin (or more). Check out the photos below of our recent audit.



Town of Goffstown, New Hampshire
July 25, 2019 · 🌐

Woo-hoo! Goffstown is recycling right!

**KNOW THE RULES
RECYCLE RIGHT**

Goffstown DPW
Public & Government Service

51 LIKES

[Send Message](#)

Goffstown DPW
July 25, 2019 · 🌐

RECYCLE RIGHT NEWS:

Today DPW completed close to 100 barrel audits in the Synchronicity Park, Danis Park and Morgan Estates neighborhoods. The single stream recycling in the blue bins looked really good. We were very excited to see almost NO bagged recyclables. Some people started using paper bags which is a great way to store recyclables.

The common TRASH items we saw in blue bins today were: chip bags, paper towels and napkins, thin plastic packaging wrap and some styrofoam. Otherwise things were looking clean and dry!

Thanks so much for everyone's efforts at Recycling Right! It is much appreciated! We will be out again next week to do some more. Keep up the good work!

For more info on Recycling Right, please go to our website where there are posters you can print out for home with the DOs and DON'Ts of recycling.
<https://www.goffstown.com/recycleright>

COMPLETE AUDITS & SHARE DATA

LET RESIDENTS KNOW WHAT YOU ARE SEEING.
HELP SPREAD THE WORD.

AUDIT VIDEO CREATED BY INTERNS

Posted on Facebook & Shared with GTV




**STYROFOAM
IS TRASH**



**DO NOT PUT IN
THE RECYCLING**

**YARD WASTE
IS NOT
RECYCLABLE**



**BRING TO
TRANSFER STATION**

**RINSE CONTAINERS
BEFORE RECYCLING**



**FOOD WASTE
CONTAMINATES
RECYCLING**

**DON'T
BAG** 

Recyclables



**NO PLASTIC BAGS
IN RECYCLING**

Thank you for recycling. This sign funded by MassDP


**POSITIVE
REINFORCEMENT
& REMINDERS**

NEIGHBORHOOD MESSAGE
BOARDS ON COMMON
MISTAKES & FLYERS



Most Common Recycling Violations

- Unrecyclable Metal: 17%
- Construction Material: 11%
- Food Trash: 11%
- Wood: 9%
- Yard Waste: 7%
- Fabrics: 7%
- Electronics: 7%
- Hoses (Rubber and Plastic): 6%
- Oil / Filters: 5%
- Black Trash Bags: 5%
- Toys: 4%
- Shoes: 4%
- Other: 7%




KNOW THE RULES

RECYCLE RIGHT

Most Common Recycling Violations

- Unrecyclable Metal: 17%
- Construction Material: 11%
- Food Trash: 11%
- Wood: 9%
- Yard Waste: 7%
- Fabrics: 7%
- Electronics: 7%
- Hoses (Rubber and Plastic): 6%
- Oil / Filters: 5%
- Black Trash Bags: 5%
- Toys: 4%
- Shoes: 4%
- Other: 7%





53 Shares
56 "likes"
60 Comments



GILFORD

GOAL

OPEN NEW SOLID WASTE FACILITY



GILFORD NEW FACILITY & SOURCE SEPARATED RECYCLING



**EDUCATE
RESIDENTS**



**SHARE DATA
FROM NEW FACILITY**



**POSITIVE
REINFORCEMENT
& REMINDERS**

EDUCATE RESIDENTS



Gilford Solid Waste Center Recycling List



CARDBOARD



PLASTICS (#1, #2, #5 & #7)



STEEL/TIN CANS



GLASS



ALUMINUM CANS



MIXED PAPER



MIXED PAPER

For more info please go to www.gilfordnh.org/recycle right or pick up flyers at DPW



Gilford Solid Waste Center Separating Recyclables

MATERIAL	CAN INCLUDE	DO NOT INCLUDE	NOTES
Cardboard	All corrugated cardboard (incl. clean pizza boxes)	NO waxed boxes, messy pizza boxes or plastic film packaging	Please flatten Tape OK Shiny finish OK
Mixed Paper	Junk mail, magazines, egg cartons, newspaper, food/cereal boxes, office/school paper, phone books, shredded paper, paperbacks	NO paper towels, tissues, napkins NO corrugated cardboard or waxed boxes such as milk or juice cartons	Staples, paper clips and window envelopes are OK!
Plastics	#1, #2, #5, and #7 Plastic bottles, jars, tubs and containers only	NO caps, plastic bags, plastic film, styrofoam, bubble wrap, straws	Please remove caps Empty food & rinse Look for ♻️ symbol
Steel/Tin Cans	Soup, food, coffee cans	NO paint and aerosol cans	Please rinse Labels OK Sticks to a magnet
Aluminum Cans	Beverage cans	NO aluminum foil, pie plates or pet food cans	Please rinse Labels OK Will not stick to a magnet
Glass	Glass bottles and jars	NO porcelain sinks & toilets, light bulbs, headlights or windshields.	See attendant for special instructions on items in NO column
Trash	All household trash	NO recyclables, yard waste, hazardous waste or items containing mercury	See attendant for special instructions on items in NO column

GILFORD RECYCLE CENTER

100 Recycle Way, Gilford NH 03249
OPEN Tues – Saturday, 8am – 3:45pm
WEBSITE: www.gilfordnh.org/recycleright
EMAIL: recycle@gilfordnh.org
PHONE: 293-0220

*** Please contact DPW with any questions on what is recyclable in the Town of Gilford. Remember “When in Doubt. Throw it Out.” Contamination in the recycle stream effects market value of loads. Thank you for your cooperation!*



Gilford Solid Waste Center Household Trash



PLASTIC WRAP,
FILMS OR TARPS



DIRTY RECYCLING
OR LIQUIDS



COATED PAPER
ITEMS



DISHES OR BAKING
GLASS



DISPOSABLE ITEMS



PLASTIC BAGS



FOOD WASTE



ASEPTIC/WAX COATED
CONTAINERS



CHIP BAGS, FOOD
WRAPPERS

For more info please go to www.gilfordnh.org/recycle right or pick up flyers at DPW



Gilford Solid Waste Center Household Trash

CAN INCLUDE	DO NOT INCLUDE
<ul style="list-style-type: none"> ✓ Chip bags, food wrappers (e.g. granola bars) ✓ Coated paper items ✓ Dirty recycling or liquids (messy pizza boxes, cups with liquid still in them) ✓ Dishes or baking glass ✓ Disposable items (napkins, paper towels, tissues, plastic silverware) ✓ Food waste ✓ Juice pouches ✓ Plastic wrap, shrink wrap, plastic films or tarps ✓ Plastic toys, ✓ Plastic bags, caps, lids ✓ Rags, fabrics, pillows ✓ Wax coated containers (such as juice or milk cartons) 	<ul style="list-style-type: none"> ✗ Yard Waste ✗ Household Hazardous Waste (HHW): Automotive products & fuels, cleaners, pesticides, fluorescent bulbs, batteries, pool chemicals, mercury thermometers ✗ Tires ✗ Construction and demo debris ✗ Mattresses & box springs ✗ Furniture & carpets ✗ Appliances <p><u>THINGS THAT ARE RECYCLABLE:</u></p> <ul style="list-style-type: none"> ✗ Aluminum Cans ✗ Cardboard ✗ Glass ✗ Mixed Paper ✗ Plastics (#1, #2, #5 & #7) ✗ Steel/Tin Cans ✗ Trash

GILFORD RECYCLE CENTER

100 Recycle Way, Gilford NH 03249
OPEN Tues – Saturday, 8am – 3:45pm
WEBSITE: www.gilfordnh.org/recycleright
EMAIL: recycle@gilfordnh.org
PHONE: 293-0220

*** Many items not allowed in the household trash are accepted at the Gilford Recycle Center for a fee. Please see fee schedule on the website for more info.*

CREATE BASIC
PUBLIC EDUCATION
FLYERS

MAKE AVAILABLE
ONLINE & AT ALL
TOWN OFFICES

HOLD PUBLIC
INFO MEETINGS



Gilford Department of Public Works shared a post.
September 23, 2020 · 🌐

RECYCLE RIGHT UPDATE – PLASTICS

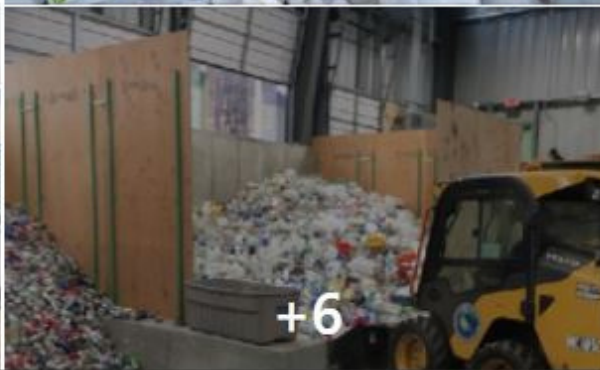
From January to August Gilford residents recycled over 32,000 lbs of plastic!! The Solid Waste Center Attendants baled this material weekly and loaded 35 bales onto a tractor-trailer headed for Trigon Plastics in PA. The average weight of EACH bale was 929 lbs and contained Plastic #s 1, 2 5 and 7. But the best news...even with the recycling markets being low, the Town was able to make a small revenue on this shipment.

So far this year the Town has recycled, baled and shipped 131 TONS or 262,000 lbs of cardboard, mixed paper and plastics, bringing in a revenue of close to \$5,000. If we had processed these recyclables as household trash, it would have cost \$12,000 so that is a net WIN of \$17,000 just in household recyclables processed so far this year!

Great job!! Give yourselves a high-five for RECYCLING RIGHT and next time you visit the Solid Waste Center, let the attendants know you appreciate their hard work too!

To learn more info on Trigon Plastics and what they do with Gilford's plastic bales check out this article: <https://www.trigonplastics.com/trigonplastics.pdf>

#RecycleRight
#plasticrecycling



SHARE ON
FACEBOOK
PAGE

SHARE DATA
FROM NEW FACILITY

- UPDATES ON BALING
- WHERE RECYCLABLES GO
- HOW YOU CAN HELP POSTS?
- THANK RESIDENTS!!!



Gilford Department of Public Works
Published by Meghan Theriault · November 8, 2020 · 🌐

RECYCLING RIGHT BRINGS IN REVENUE

DPW is happy to share that the Town of Gilford residents brought in over 19,000 lbs of aluminum cans this year which were recently sold to [Northeast Resource Recovery Association](#) vendor Triple M of Ontario, Canada. Aluminum cans bring in the highest revenue of any other recyclable product sold to vendors.

This vendor receives bales from various suppliers, such as the Town of Gilford, breaks them open, ensures quality and re-bales with a high-density baler to meet the end-users specifications (i.e. mills that produce aluminum slabs to be used in new aluminum can manufacturing). NRRA told us that our bales were of such great quality they were shipped right to the end-user mill.

The Town will anticipate over \$7,000 just from these aluminum cans! Thanks to everyone who brought us their RINSED aluminum cans – keep up the GREAT work Gilford!!

For a neat flyer on what happens to cans that are recycled (maybe share with your kids) click this link: <https://www.gilfordnh.org/.../10/CANRecyclingProcess.pdf>



Sorting Ideas



Baling Updates



GSWC Crew & Tours





18 GALLON RECYCLING TOTES NOW AVAILABLE FOR PURCHASE

The Gilford Solid Waste Center recently purchased 100 recycle totes through New Hampshire the Beautiful which will be sold at cost for \$6.50 each. Max of three (3) per resident please. Call or stop by the Gilford Solid Waste Center to pick up yours today.

HUNTER GREEN – 18 GALLON RECTANGULAR (25.75"X16.25"X14.5")

New Hampshire the Beautiful (NHtB) is dedicated to helping New Hampshire schools, towns, non-profits and businesses "professionalize" recycling by providing attractive collection bins at discounted prices. Take advantage of this great opportunity to "spruce up" your recycling program at a savings!



RECYCLE RIGHT THIS HOLIDAY

NAUGHTY LIST

- Wrapping Paper
- Ribbons & Bows
- Christmas Lights
- Garland & Tinsel
- Bubble Wrap
- Plastic Air Pillows
- Styrofoam (incl. peanuts)
- Batteries
- Gift Bags
- Tissue Paper

NICE LIST

- Your Regular Recyclables
- Cardboard Boxes
- Paper Boxes
- Paper Cards & Envelopes
- Catalogs
- Paper Cartons
- Christmas Trees (with no decorations)

RECYCLE RIGHT AT GILFORD SOLID WASTE CENTER
Visit us at www.gilfordnh.org/recycleright



KEEP GILFORD CLEAN

FREE DUMP DAYS 2021

SAT. APRIL 24 & SUN. APRIL 25TH
8:00AM - 3:45PM
GILFORD SOLID WASTE CENTER
100 RECYCLE WAY

Gilford residents may bring one (1) load per day/household. Borrowing a vehicle or having a neighbor help bring your items? Stop by the Gilford DPW Office to get a day pass if not using your own vehicle. This will be the last annual Free Dump Days event per the Gilford Selectmen.

POSITIVE REINFORCEMENT & REMINDERS

ADDED IN SEASONAL TIMED
MESSAGES AND FLYERS

FABRICS ARE NOT RECYCLABLE



BRING TO BINS AT TRANSFER STATION

PLEASE DO NOT RECYCLE US!

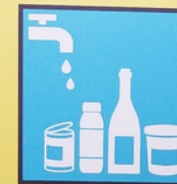


WE GO IN THE TRASH

ASEPTIC CONTAINERS ARE NOT RECYCLABLE



RINSE CONTAINERS BEFORE RECYCLING



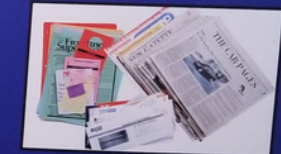
FOOD WASTE CONTAMINATES RECYCLING

STYROFOAM IS TRASH



DO NOT PUT IN THE RECYCLING

RECYCLE MIXED PAPER



NOT PAPER PLATES, CUPS, TOWELS OR TISSUES

GILFORD SOLID WASTE CENTER

Screened Loam for Sale
\$18/cy



Screened Loam mixed with compost and wood ash is available for purchase at the Gilford Solid Waste Center, 100 Recycle Way. Loam will be sold to the public (residents or contractors) for \$18/cy.

Residents may receive one loader bucket (approx. 3cy) for free and purchase any additional loam at \$18/cy. Please stop by the front office and let them know you would like to pick some up or call with questions 293-0220.

2021 GOALS

I PROMISE MYSELF TO...

**** GET MY NEW TOWN STICKER ****

Recycle Right
Say HI to SW Attendants
Stay Safe and Healthy



2020 TAXPAYER OF
GILFORD
NEW HAMPSHIRE
OLD
Exp. 12/31/20

2021 TAXPAYER OF
GILFORD
NEW HAMPSHIRE
NEW
Exp. 12/31/21



GILFORD SOLID WASTE CENTER

Closed Sundays and Mondays



Just a reminder that the Gilford Solid Waste Center is closed every Sunday and Monday. Normal Hours of Operation are Tuesday - Saturday 8AM - 3:45PM.

For inquiries, please call 603-293-0220
www.gilfordnh.org/recycleright

HURRY UP & PACK
YOUR TRUCK OR CAR
FOR THIS WEEKEND'S
EVENT! CLICK LINK
ON POST FOR FULL
LIST OF ACCEPTABLE
ITEMS.



FREE DUMP DAYS

GILFORD SOLID WASTE CENTER
SATURDAY APRIL 24TH & SUNDAY APRIL 25TH
8AM - 3:45PM

ROADSIDE CLEANUP BAGS FREE!

BLUE ROADSIDE CLEANUP
BAGS ARE AVAILABLE IN THE
DPW ENTRYWAY AT 55
CHERRY VALLEY ROAD.
PLEASE LEAVE FULL BAGS ON
SIDE OF ROAD AND CALL IN
LOCATION TO
527-4778 FOR STATE/TOWN
PICKUP. THANK YOU HELPING
KEEP OUR COMMUNITY
CLEAN!

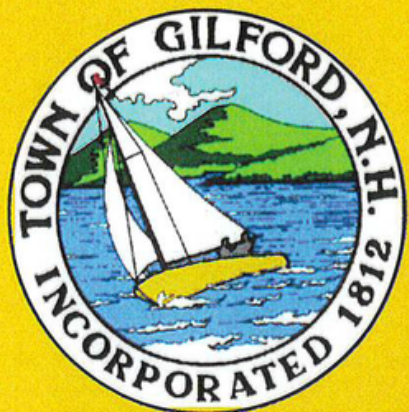


GOT TRASH?
BRING US YOUR BULK
TRASH FOR FREE THIS
SAT & SUN. MUST BE A
GILFORD RESIDENT.
SEE FULL LIST IN
COMMENT.



FREE DUMP DAYS

GILFORD SOLID WASTE CENTER
SATURDAY APRIL 24TH & SUNDAY APRIL 25TH
8AM - 3:45PM



KNOW THE RULES RECYCLE RIGHT

Gilford Department of Public Works

55 Cherry Valley Road
Gilford, NH 03249
Hours: 7:30 am - 4:00 pm
Phone: 527-4778

Gilford Solid Waste Center

100 Recycle Way
Gilford, NH 03249
Hours: 8:00 am - 3:45 pm
Phone: 293-0220
gilfordnh.org/recycleright

 Find us on Facebook:
@gilfordnhDPW

NOTICE OF WORK

The Gilford Department of Public Works (or their contractor) will be doing work in your neighborhood as noted below. Please contact us with any questions at 527-4778.

Thank you and have a great day!

- ☐ Drainage Installation
- ☐ Ditch Work
- ☐ Brush/Tree Work
- ☐ Pavement
- ☐ Road Repairs
- ☐ Other:

Gilford Department of
Public Works

GET INFO OUT INTO COMMUNITY

POST TO ALL PLATFORMS

- Town Website & Social Media
- Local TV Station
- All Town Offices & Transfer Station
- Newsletters - Town / Library / School
- Ad In Local Paper
- Public Presentations
 - Public Info Session
 - Rotary Club
 - Local Enviro Clubs
 - School
- Community Events
 - National Night Out
 - Touch A Truck
 - Public Works Week
 - Old Home Day
 -



2019 DPW ART CONTEST
CALLING ALL ARTISTS!
 Theme: "Recycle Right"

EVENT SPONSORED BY:
 TOWN OF GOFFSTOWN PUBLIC WORKS
 OFSB Franklin Savings Bank
 Smarter Banking. Easier Living.
 585 Mast Road Manchester, NH 603.222.2059 www.fsbnh.bank

Submit your 2D art design or drawing by **May 30, 2019**

Age Groups:
 • K-4
 • 5-8
 • 9-12

KNOW THE RULES
RECYCLE RIGHT

FOR RECYCLING RULES, FLYERS, CONTEST INFO AND MORE: GOFFSTOWN.COM/RECYCLERIGHT



Make Recycling Right Fun



CONTACT INFORMATION



gilfordnh.org/recycleright



MEGHAN THERIAULT, P.E.

Gilford Public Works Director
dpwdirector@gilfordnh.org
Direct: 527-4783



facebook.com/gilfordnhDPW



Trash on the Lawn Day with NRRA

- NRRA helps organize an event with schools called Trash on the Lawn Day.
- Eye Opening Experience for students to see how much trash is actually recyclable.
- Opportunity to talk about local recycling issues.
- Kids get excited to "teach" parents how to "Recycle Right".
- Opportunity to educate teachers on classroom recycling as well.

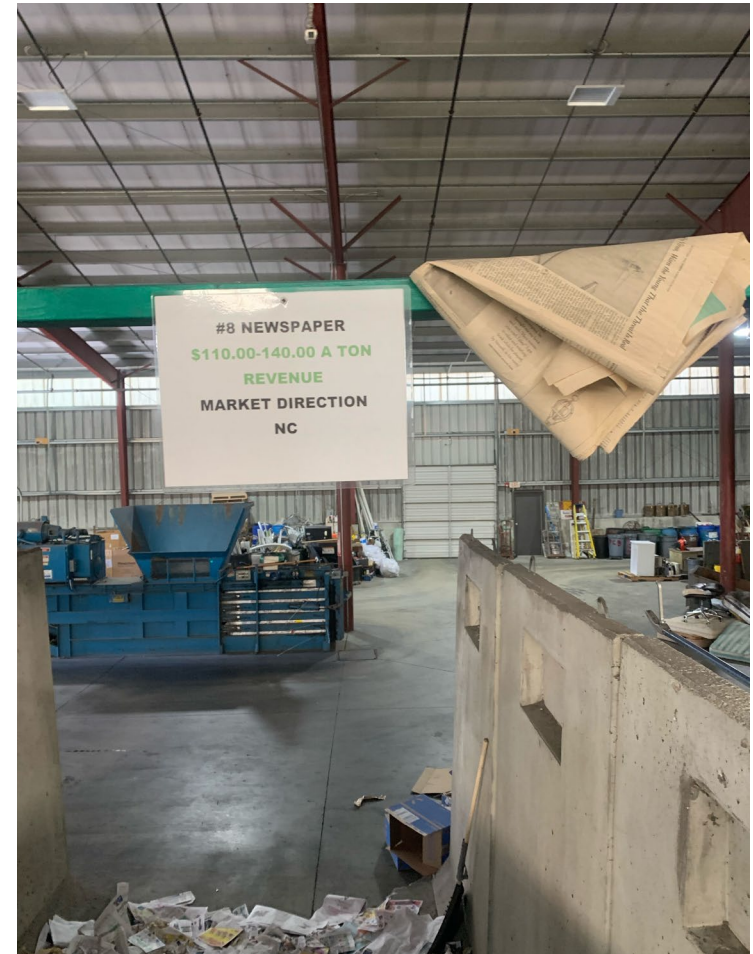
Steve Bullek

Public Works Director

Town of Lee

sbullek@leenh.org

[illegible]







One Bin at a Time – Yard Waste

Talking trash with Jen Messeder, LSC member

If you've been in town for a while, you probably already know the answer to "what do I do with my yard waste?" But if you're new and are used to including bags of leaves and grass clippings with your curb-side pick-up, you might be wondering...

Yard waste doesn't go in the solid waste bin. As to where it does go, you might have some options depending on whether you have some woods on your property that can discreetly house a brush and debris pile (or two).

Grass clippings and dry leaves:

- Grass clippings and leaves can be composted, either at home or in the Transfer Station's yard waste area (where staff turns it into compost, free for the taking).
- A better and easier option is to get a mulching mower or a mulching blade for the mower you have. This chops the clippings and leaves into small pieces that shuffle down through the grass to the topsoil. There, it will compost in place, returning nutrients to your lawn and reducing the need to fertilize. Win-win!

Brush – If you have some woods on your property:

- Pick a spot or two for piles where they won't be an annoying sight for your neighbors.
- Make a pile for woody brush and a pile for less robust yard waste, like dead leaves and garden debris. Both piles will settle and break down over time.

Brush – If you don't have woods:

- Bring your woody brush to the Transfer Station's brush pile, which is just beyond the yard waste area, down the slope to the right. Note that it costs us to have this brush chipped and hauled to be burned for energy.
- If you have a chipper at home, you can use your chipped wood as mulch on your property, or you can dump it in the Transfer Station's mulch pile, which is next to the compost pile.

Where the magic happens, on the right side of the Transfer Station building.



Yard waste



Compost and mulch – free!



Brush – down the slope

Refuse • Reduce • Reuse • Repair • Repurpose • Recycle • Rot

• Lee NH Sustainability Committee • Low Carbon Diet • Seacoast NH • "Zero Waste" groups

Published in E-Crier on June 14, 2019; revised May 19, 2020



One Bin at a Time – Plastic #2 Mixed Colors

Talking trash with Jen Messeder, LSC member

Now that you can recognize your #2 natural items (white-ish plastic that you can see through), it should be simple to identify your #2 mixed color plastics:

- They are #2 plastic
- They are opaque (you can't see through them)
- They come in just about any color you can imagine

Here's what goes in the #2 mixed color plastic bin.

YES, please!	
Earn: \$140/ton (as of Q1 2020) Examples: <ul style="list-style-type: none"> • Detergent bottles • Shampoo bottles • Coffee containers • Hand wipe containers • Motor oil bottles • White "light-block" milk jugs • Plastic caps removed from their bottles 	
Any sort of bottle, jug or container that's a #2 that you can't see through, or a cap made of that same sort of plastic.	

NOT HERE (but maybe in another bin)	
Really small pill and vitamin bottles. These are a little too sturdy.	
When in doubt, ask a Transfer Station staff person.	
The white-ish #2 natural plastic that you can see through. These get their own bin.	

Refuse • Reduce • Reuse • Repair • Repurpose • Recycle • Rot

• Lee NH Sustainability Committee • Low Carbon Diet • Seacoast NH • "Zero Waste" groups

Published in E-Crier on August 16, 2019; revised September 15, 2020

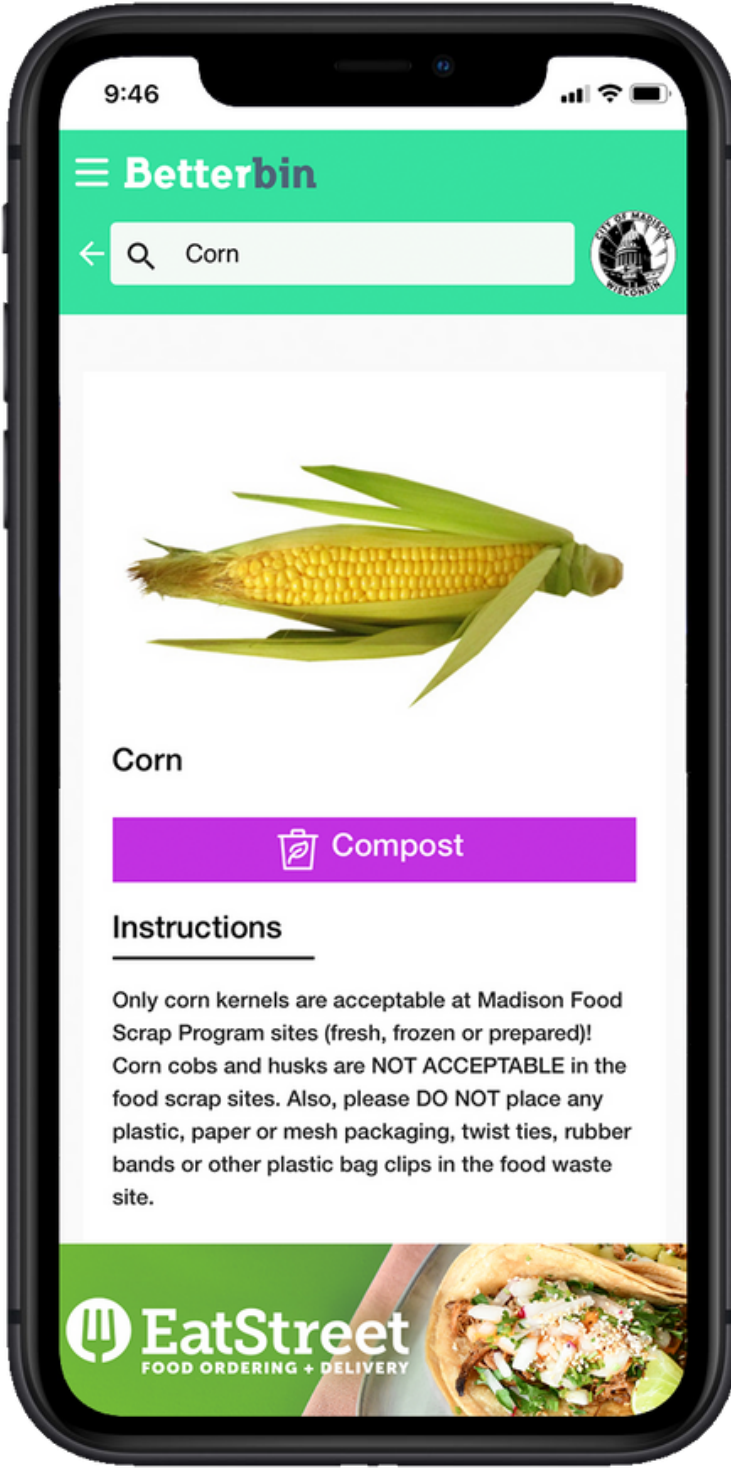
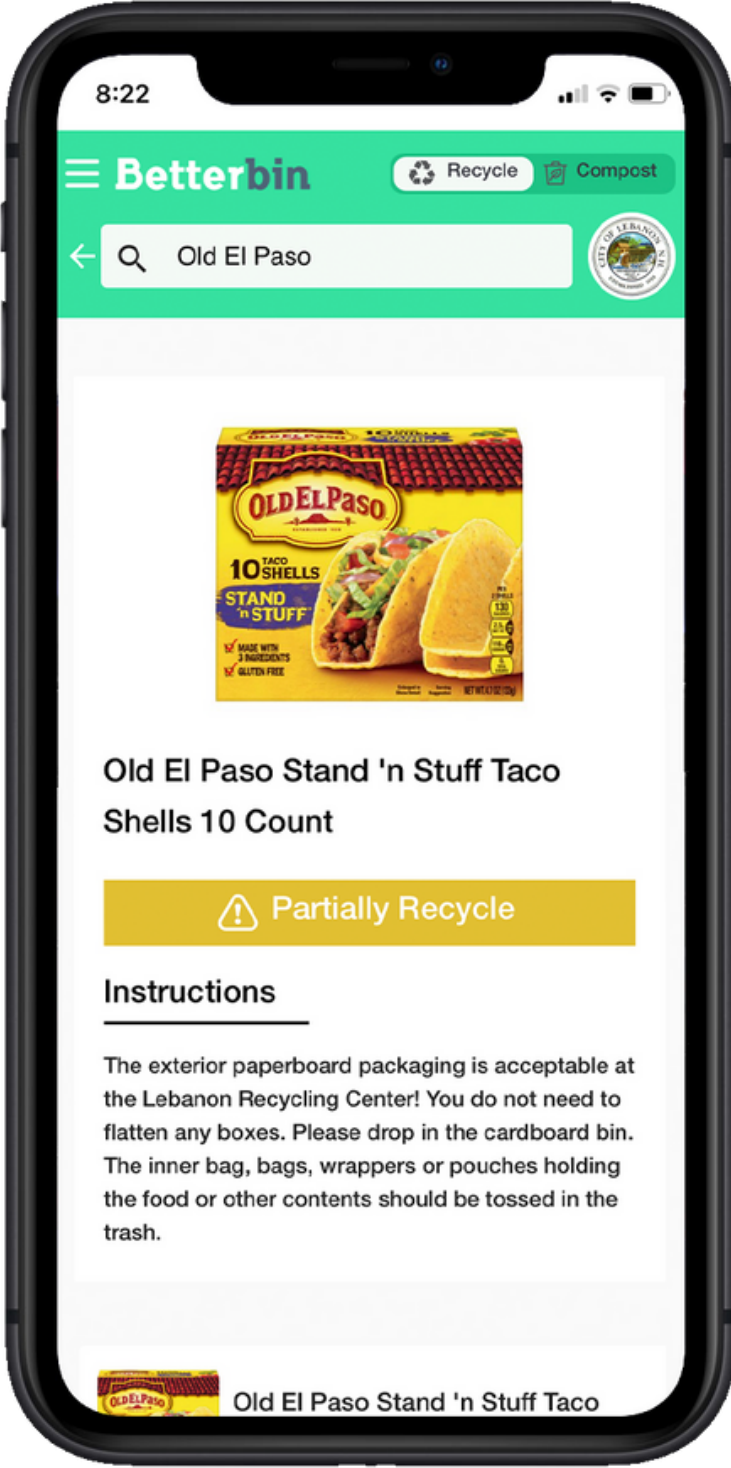
Problem/Opportunity

- **75% of people were accessing materials through a smart phone**
 - How can we serve them better?
- **Need a consistent way to educate residents across a large service area that also includes private haulers**
 - How do we get customers OUR guidelines?
- **No sorting equipment so customers need to follow directions in order to minimize contamination**
 - With a small team, how do we automate education/outreach as much as possible?



Betterbin

Solution - Technology



Betterbin

LAUNCH

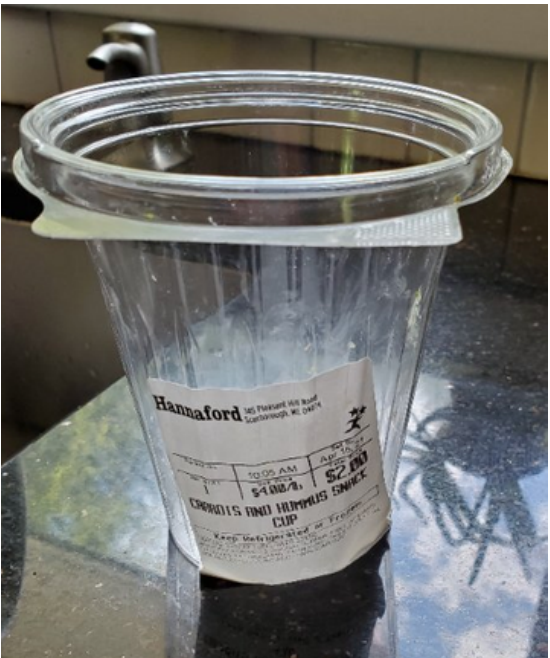
4/12

USERS

200

SEARCHES

566



Contact Info

● **Marc Morgan**
Solid Waste Manager
City of Lebanon
Marc.Morgan@lebanonnh.gov

● **Michelle Goetsch**
Founder/CEO
Betterbin
mgoetsch@betterbin.app



Betterbin